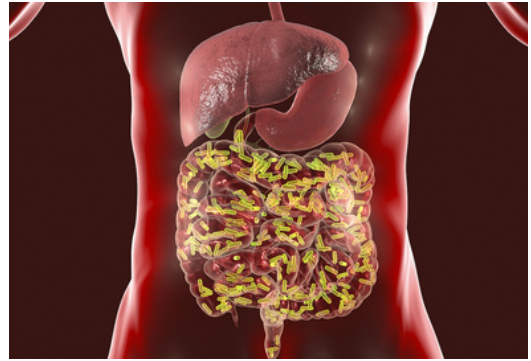


# STOOL TESTING

Stool testing is usually performed by a medical doctor, nutritionist, naturopath or functional medicine practitioner. The GI Map and GI Ecologix are two popular tests and more details can be found at:

- <https://www.diagnosticsolutionslab.com/tests/gi-map>.
- <https://invivohealthcare.com/gi-ecologix/>

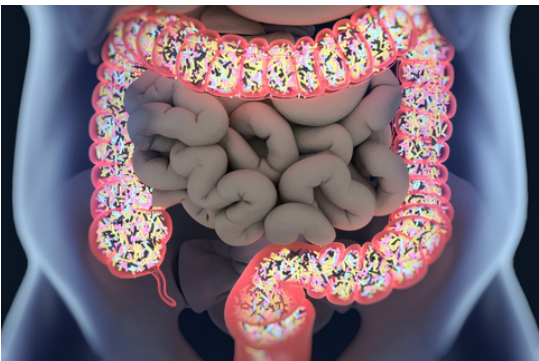


If you are based in the UK (and some European countries), you can order a test and consultation with me using this link:

**<https://bit.ly/GIStoolTests>**

Those on The Eliminate Adult Acne Coaching Programme receive their first year of lab result analyses complimentary, so aren't required to purchase a consultation.

If you want to run a stool test, but unsure which one to run, please email me @ [leigh@eliminateadultacne.com](mailto:leigh@eliminateadultacne.com) to discuss your case.



***"There are over 100 billion microbes in each gram of stool!"***